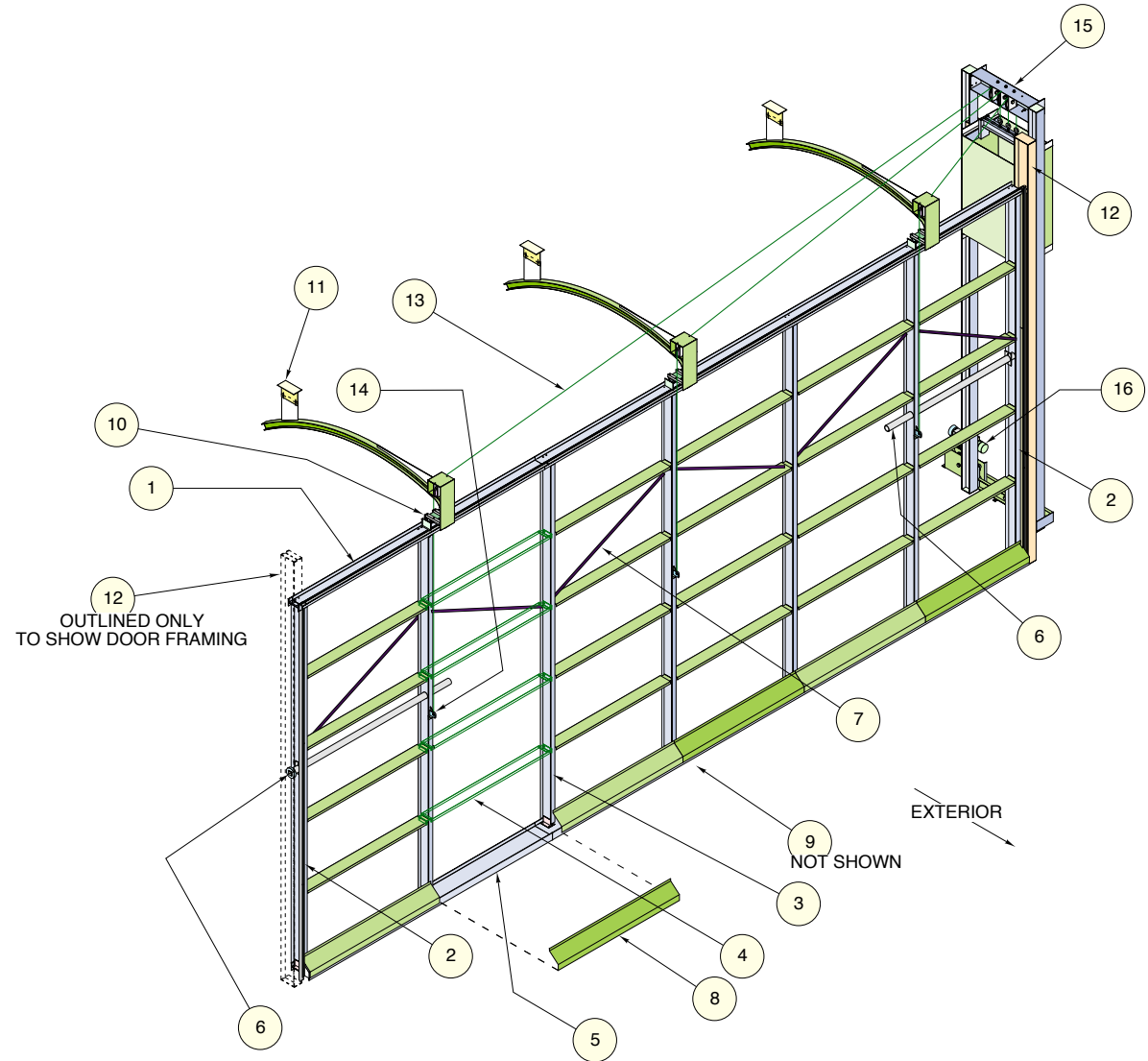


T-Series Door Components

1. W-beam Top Horizontal
2. W-beam End Verticals
3. W-beam Intermediate Vertical Members
4. Formed Channel Intermediate Girts
5. W-beam Bottom Horizontal
6. Side Roller Assembly "See Hardware Dwg"
7. Cross-bracing
8. Formed Drip Pan
9. Sill Lock/Landing Pad Assembly
10. Top Roller Slide Base Assembly
11. Curved Control Top Track System
12. Side Track Assembly Attached To Building Jamb Column
13. IPS IWRC Wire Rope
14. Wire Rope Pick-up Bracket
15. Counterweight Guide Track Assembly w/Counterweight Tub
16. Floor Mounted Operator Assembly

- Structural Steel For Door Framing Is 50 KSI.



ISOMETRIC EXTERIOR ELEVATION

NOT TO SCALE
T-SERIES, MODEL TP300 DOOR DETAILED

RIGHT HAND*

* LEFT HAND COUNTERWEIGHT IS ALSO AVAILABLE

