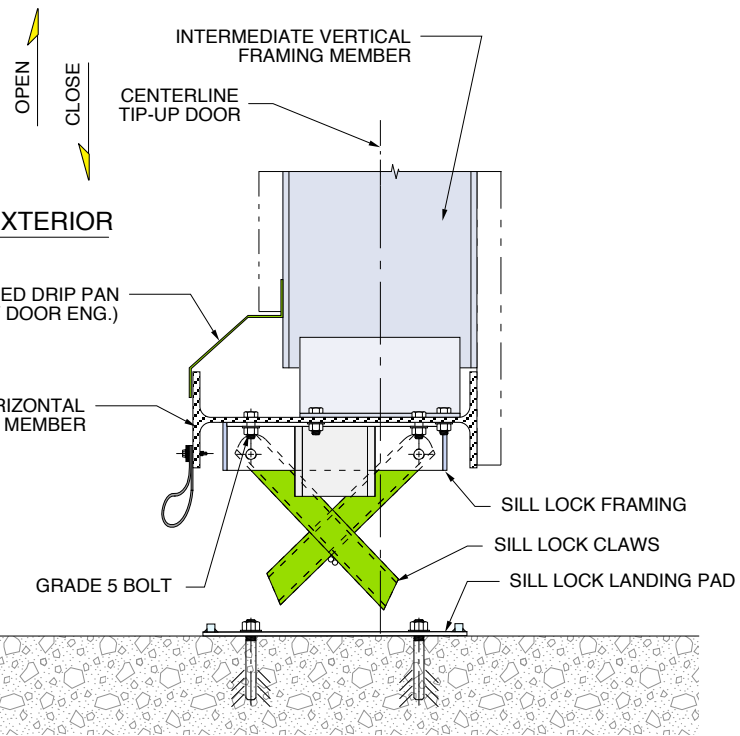


1 SIDE ROLLER ASSEMBLY
(2) REQUIRED PER DOOR

- SIDE ROLLER COMPONENTS**
1. Side Roller with Bronze Bearing
 2. Side Roller Adjustment Plates
 3. Side Roller Pipe
 4. Threaded Rod Adjustment Screws



F SECTION AT THE SILL LOCK ASSEMBLY...LANDING PAD
SHOWS DOOR IN OPERATION

