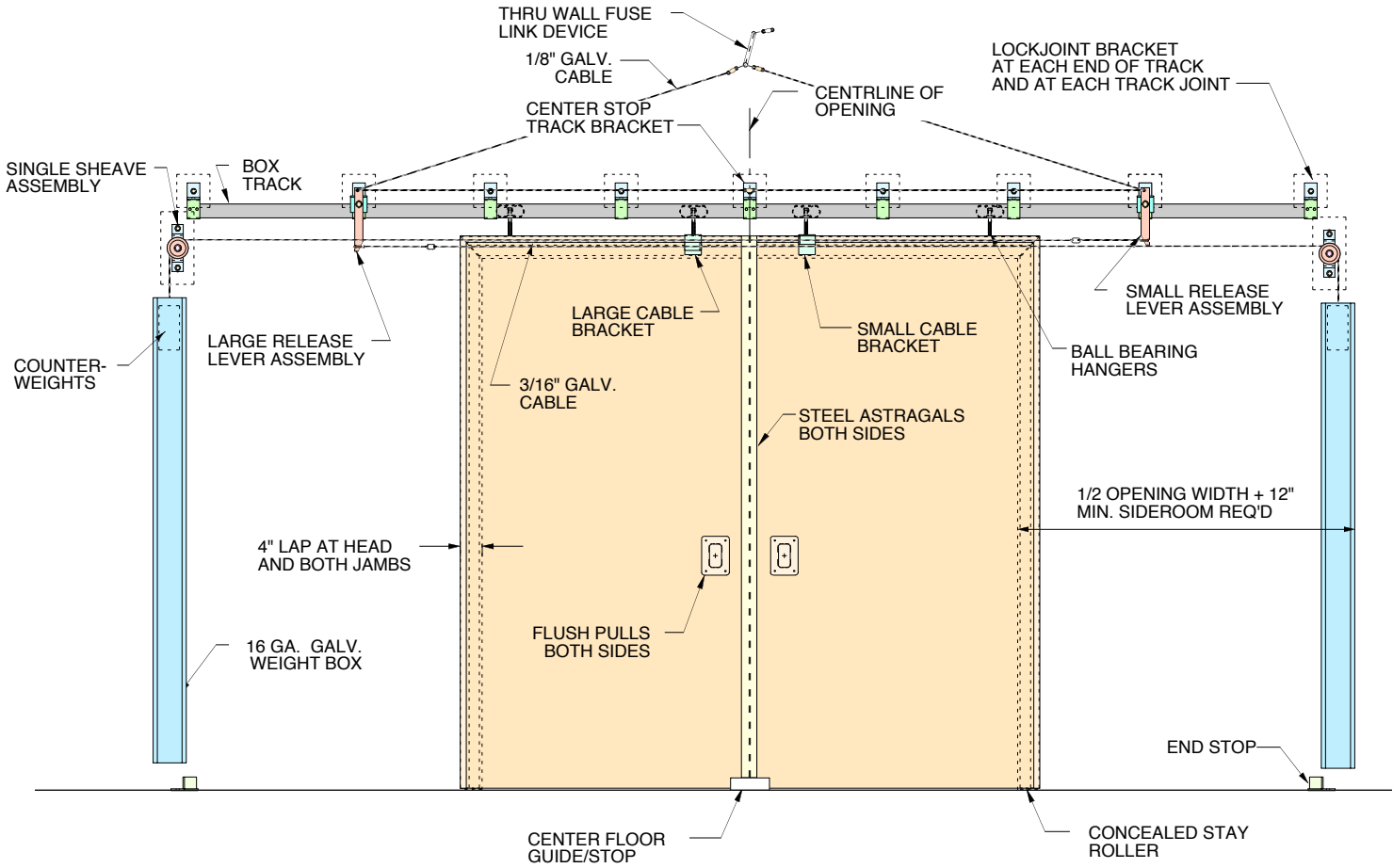


DOOR SCHEDULE

MARK NO.	DOOR SERIES	DOOR THICKNESS	OPENING SIZE		DOOR SIZE		WALL THICKNESS	DOOR ARRANGEMENT	LABEL	PASS DOOR SWING	HDW'E SET #	REMARKS
			WIDTH	HEIGHT	WIDTH	HEIGHT						

DOOR ARRANGEMENT		PASS DOOR SWING	
PLAN VIEW OF OPN'G SHOWING DIRECTION OF SLIDE TO OPEN		A	
1	←	B	↘
2	→	C	↙
3	← →	D	↘ ↙



DOOR SPECIFICATIONS

DOORS WILL HAVE A STRUCTURAL CORE OF RESIN IMPREGNATED KRAFT HONEYCOMB WITH 18, 16, OR 14 GAUGE GALVANNEALED STEEL SKINS BONDED TO THE CORE UNDER PRESSURE. INTERIOR FRAMING CHANNELS WILL BE 14 GA. GALVANNEALED STEEL. THE FLUSH PULLS, 14 GA. LEAD ARMOR EDGE AND TRAIL EDGE DOOR INTERLOCK WILL BE FACTORY WELDED TO THE PANELS. THE CONTINUOUS TOP DOOR INTERLOCK WILL BE FIELD INSTALLED ON SPLICE DOORS. THE PANELS WILL BE FACTORY DRILLED AND TAPPED TO RECEIVE HANGERS AND TIE BARS. ALL EXPOSED WELDS WILL BE GROUND SMOOTH AND FILLED. THE DOORS WILL PRESENT A FLUSH APPEARANCE WITH NO EXPOSED FASTENERS. THE DOORS ARE NOMINALLY 1 3/4" THICK.

THE DOORS AND HARDWARE SHALL BE U.L. LISTED AND FACTORY MUTUAL APPROVED FOR A FOUR HOUR, THREE HOUR "A", ONE AND ONE -HALF HOUR "B", OR A THREE QUARTER HOUR "C" LABEL RATING.

ALL EXPOSED DOOR SURFACES WILL RECEIVE ONE COAT OF GRAY EPOXY PRIME PAINT AT THE FACTORY.

HARDWARE FOR THE DOORS WILL HAVE A GALVANIZED OR ZINC PLATED FINISH. HARDWARE INCLUDES BOX TRACK, ADJUSTABLE TRACK BRACKETS, BINDERS, WALL BOLTS, BUILDING INTERLOCKS AND CONCEALED STAY ROLLER. HANGERS SHALL BE ZINC PLATED.

DOORS ARE DESIGNED AND TESTED FOR USE ON BRICK, CONCRETE, OR CONCRETE BLOCK WALLS.

BI-PARTING SLIDE ELEVATION

3700 SERIES SLIDING FIRE DOOR

DOOR ENGINEERING AND MANUFACTURING
Opening to Your Standards.

PROJECT	
LOCATION	JOB NUMBER:
ARCHITECT	DATE:
CONTRACTOR	DRAWN BY:
DISTRIBUTOR	DRAWING NO. OF